

beadworld

View full class descriptions, download the calendar & register for classes online:

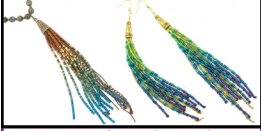
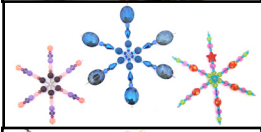
<http://beadworldnw.eventbrite.com>

All supplies for classes are provided in the class, there are no additional materials to purchase.

Unless otherwise specified, all classes are for ages 9+.

There is a minimum and a maximum number of students for each class. Waitlists for full classes are available online.

A minimum of 48 hours notice is mandatory for any class cancellation to receive a full refund.



Basic Bead Stringing - \$25

Level: Beginner Instructor: Staff Prerequisite: None

Tue, September 13th, 10-1pm Sat, September 24th, 10-1pm Sun, October 9th, 10-1pm
Wed, October 26th, 6-9pm Thu, November 17th, 6-9pm Sat, November 26th, 3-6pm
Fri, December 9th, 10-1pm Sun, December 11th, 10-1pm

Knotting 1: Pearl Knotting - \$25

Level: Beginner Instructor: Nicky Prerequisite: None

Fri, September 30th, 6-9pm Sat, November 26th, 2-5pm
Sat, December 10th, 10-1pm

Knotting 2: Spaced Knotting - \$25

Level: Beginner Instructor: Nicky Prerequisite: None

Sat, September 10th, 10-1pm Tue, November 15th, 6-9pm
Sat, December 10th, 2-5pm

Tasseled Mala Necklace - \$40

Level: Beginner Instructor: Nicky Prerequisite: None

Tue, September 27th, 6-9pm Sat, October 1st, 10-1pm
Sun, November 20th, 10-1pm Tue, December 13th, 10-1pm

Introduction to Color & Design- \$35

Level: Any Instructor: Christina Prerequisite: None

Sat, October 15th, 10-2pm
Tue, November 29th, 12-4pm

Beaded Snowflake Ornaments - \$25

Level: Beginner Instructor: Nicky Prerequisite: None

Sat, November 5th, 2-5pm
Mon, December 19th, 10-1pm

Beaded Tassels - \$30

Level: Beginner Instructor: Camille Prerequisite: Wire 1

Sun, September 18th, 12-3pm Fri, October 21st, 6-9pm
Sat, November 12th, 2-5pm

Wire 1: Beginning Wire Working - \$25

Level: Beginner Instructor: Staff Prerequisite: None

Tue, September 13th 6-9pm Sat, September 24th, 3-6pm Sun, October 9th, 2-5pm
Thu, October 27th, 10-1pm Thu, November 17th, 10-1pm Sat, November 26th, 10-1pm
Fri, December 9th, 6-9pm Sun, December 11th, 2-5pm

Wire 2: Wire Wrapping - \$30

Level: Intermediate Instructor: Christina Prerequisite: Wire 1

Sun, September 11th, 12-3pm Thu, October 13th, 10-1pm
Sat, November 19th, 10-1pm Tue, December 13th, 6-9pm

Wire 3: Advanced Wire Working - \$50

Level: Advanced Instructor: Christina Prerequisite: Wire 2

Sun, November 20th, 10-4pm
Thu, December 8th, 10-4pm

Forging Wire - \$30

Level: Beginner Instructor: Kristin Prerequisite: Wire 1

Sat, September 24th, 10-1pm Fri, October 21st, 6-9pm
Sun, November 27th, 2-5pm

Wire Findings: Earwires, Clasps & Hoops - \$30

Level: Intermediate Instructor: Christina Prerequisite: Wire 2

Tue, October 11th, 10-1pm
Sat, November 5th, 10-1pm

STRINGING

WIRE



Forged Bracelet with a Twist - \$45

Level: Intermediate Instructor: Christina Prerequisite: Intro to Butane Torch (Must be 18+)
Sat, October 22nd, 10-3pm
Tue, November 22nd, 10-3pm

Wire Wrapping Crystals, Rocks & Beach Glass - \$35

Level: Intermediate Instructor: Christina Prerequisite: Wire 2
Sat, September 3rd, 10-2pm
Fri, December 16th, 10-2pm

Resin Picture Pendants - \$45

Level: Beginner Instructor: Kristin Prerequisite: None. This class has an OPTIONAL second session.
Sat, September 10th, 3-6pm (optional follow-up Sat, September 17th, 6-7pm)
Mon, October 17th, 10-1pm (optional follow-up Mon, October 24th, 10-11am)

Making a Mold - \$25

Level: Intermediate Instructor: Kristin Prerequisite: None
Sat, September 17th, 12-1pm
Mon, November 28th, 6-7pm

Cold Enameling - \$30

Level: Intermediate Instructor: Kristin Prerequisite: None
Tue, September 20th, 10-1pm
Sat, November 19th, 10-1pm

The Amazing World of Epoxy Clay - \$30

Level: Beginner Instructor: Kristin Prerequisite: None
Sat, September 17th, 2-5pm
Wed, November 9th, 6-9pm

Beginning Peyote Stitch - \$25

Level: Beginner Instructor: Nicky Prerequisite: None
Fri, September 9th, 6-9pm
Sat, November 19th, 3-6pm

Modern Loom - \$40

Level: Beginner Instructor: Nicky Prerequisite: None, This is a two part class.
Sun, September 4th, 12-2pm & Sun, September 11th, 12-2pm
Mon, November 7th, 10-12pm & Mon, November 14th, 10-12pm

Beginning Brick Stitch - \$25

Level: Beginner Instructor: Nicky Prerequisite: None
Mon, September 26th, 10-1pm
Sat, December 17th, 10-1pm

Bead Crochet - \$45

Level: Beginner Instructor: Nicky Prerequisite: Must be comfortable with basic crochet. This is a two part class.
Mon, September 12th, 6-8pm & Mon, September 19th, 6-7pm
Sun, November 6th, 12-2pm & Sun, November 13th, 12-1pm

Aqua Verde Bracelet - \$35

Level: Beginner Instructor: Kristin Prerequisite: None
Sat, September 24th, 2-6pm
Thur, October 6th, 10-2pm

Basic Byzantine Chain - \$30

Level: Beginner Instructor: Mac Prerequisite: None
Tue, September 27th, 6-9pm Sat, October 15th, 6-9pm
Wed, November 30th, 10-1pm Tue, December 13th, 6-9pm

Euro Scale Cuff - \$30

Level: Beginner Instructor: Mac Prerequisite: None
Wed, September 21st, 6-9pm
Tue, October 11th, 10-1pm

Garter Weave - \$30

Level: Beginner Instructor: Mac Prerequisite: None
Tue, November 8th, 6-9pm
Sat, November 12th, 6-9pm

Japanese 4 in 1 - \$30

Level: Beginner Instructor: Mac Prerequisite: None
Sat, September 17th, 6-9pm
Wed, October 19th, 10-1pm

WIRE

RESIN & CLAY

BEADWEAVING

CHAINMAILLE



Persian Chain - \$35

Level: Intermediate Instructor: Mac Prerequisite: Basic Byzantine Chain
Wed, November 16th, 10-1am
Sat, December 10th, 6-9pm

Original Wrap Bracelet - \$35

Level: Beginner Instructor: Nicky Prerequisite: None
Sun, September 25th, 12-3pm
Fri, November 25th, 6-9pm

Macramé - \$35

Level: Beginner Instructor: Nicky Prerequisite: None
Wed, September 7th, 10-1pm **Fri, November 11th, 6-9pm**
Sun, November 27th, 10-1pm

Introduction to the Butane Torch - \$35

Level: Beginner Instructor: Christina Prerequisite: None (Must be 18+)
Fri, September 16th, 6-9pm **Sun, October 2nd, 10-1pm**
Tue, November 15th, 10-1pm **Sat, December 3rd, 10-1pm**

Introduction to Soldering - \$35

Level: Beginner Instructor: Kristin Prerequisite: None (Must be 18+)
Sat, September 3rd, 10-1pm **Wed, September 14th, 10-1pm** **Sat, October 1st, 10-1pm**
Sun, October 23rd, 10-1pm **Fri, November 25th, 6-9pm** **Thu, December 15th, 6-9pm**

Introduction to the Jeweler's Saw - \$30

Level: Beginner Instructor: Christina or Kristin Prerequisite: None
Fri, September 23rd, 6-9pm **Sun, October 2nd, 3-6pm**
Tue, November 8th, 6-9pm **Sun, December 4th, 10-1pm**

Custom Metal Stamping & Engraving - \$30

Level: Beginner Instructor: Kristin Prerequisite: None
Sat, September 10th, 10-1pm
Wed, December 14th, 6-9pm

Easy Metal Etching - \$45

Level: Beginner Instructor: Christina Prerequisite: None
Sun, September 4th, 12-5pm **Tue, October 18th, 10-3pm**
Sun, November 13th, 12-5pm **Thu, December 1st, 10-3pm**

3D Etching - \$55

Level: Intermediate/Advanced Instructor: Christina Prerequisite: Easy Metal Etching
Sun, October 30th, 10-4pm
Thu, November 10th, 10-4pm

Riveting 1: Stacked & Riveted Earrings - \$30

Level: Beginner Instructor: Christina Prerequisite: Wire 1
Sun, September 18th, 1-4pm
Tue, October 25th, 6-9pm

Riveting 2: Mixed Metals Riveted Pendants - \$40

Level: Intermediate Instructor: Christina Prerequisite: Riveting 1
Fri, October 14th, 10-2pm
Sat, November 12th, 3-7pm

All in One Riveted Earrings- \$30

Level: Intermediate Instructor: Christina Prerequisite: Intro to Butane Torch & Riveting 1
Fri, October 7th, 10-1pm
Sat, December 17th, 10-1pm

Bezels and Filigree Settings - \$40

Level: Intermediate Instructor: Christina Prerequisite: Riveting 1
Sat, September 10th, 2-6pm
Thu, October 6th, 10-2pm

Window Settings - \$60

Level: Intermediate Instructor: Christina Prerequisite: Wire 2 & Riveting 1
Sat, September 17th, 10-3pm
Fri, December 2nd, 10-3pm

Fold Formed Cuff - \$50

Level: Advanced Instructor: Christina Prerequisite: Intro to Butane Torch (Must be 18+)
Sun, September 25th, 12-5pm
Fri, November 18th, 10-3pm



Keepsake Hinged Lockets - \$50

Level: Advanced Instructor: Kristin Prerequisite: Intro to Soldering (Must be comfortable soldering independently) & Intro to Jeweler's Saw (Must be 18+)

Thu, October 20th, 10-3pm Sat, December 10th, 10-3pm



Bezel Setting Cabochons - \$55

Level: Intermediate Instructor: Kristin Prerequisite: Intro to Soldering (Must be 18+)

Thu, September 22nd, 10-1pm Sat, November 5th, 2-5pm
Mon, December 5th, 6-9pm



Advanced Bezel Setting Techniques - \$95

Level: Advanced Instructor: Kristin Prerequisite: Bezel Setting Cabochons & Intro to the Jeweler's Saw (Must be 18+)

Sat, October 29th, 10-4pm
Tue, December 6th, 10-4pm



Prong Setting - \$35

Level: Intermediate Instructor: Kristin Prerequisite: Intro to Soldering (Must be 18+)

Fri, October 14th, 6-9pm
Sat, November 19th, 3-6pm



Soldered Stacking Rings - \$45

Level: Intermediate Instructor: Kristin Prerequisite: Intro to Soldering & Intro to Jeweler's Saw (Must be 18+)

Sat, September 3rd, 2-5pm Sun, October 23rd, 2-5pm
Mon, November 21st, 10-1pm



Sterling Silver Inlay in Copper - \$40

Level: Intermediate Instructor: Kristin Prerequisite: Intro to Butane Torch or Intro to Soldering & Intro to Jeweler's Saw (Must be 18+)

Tue, October 25th, 10-2pm Sat, November 12th, 10-2pm



Introduction to Torch Enameling - \$45

Level: Beginner Instructor: Kristin Prerequisite: None (Must be 18+)

Sat, October 1st, 3-6pm Fri, October 28th, 6-9pm
Sun, November 27th, 10-1pm Mon, December 12th, 10-1pm



Torch Enameling: Special Effects - \$55

Level: Intermediate Instructor: Kristin Prerequisite: Intro to Torch Enameling (Must be 18+)

Sun, October 16th, 10-3pm
Wed, December 7th, 10-3pm



Texturing Metal Components - \$45

Level: Beginner Instructor: Christina Prerequisite: Intro to Butane Torch (Must be 18+)

Tue, October 4th, 10-2pm
Sun, November 6th, 12-4pm



Applied Patinas for Metals - \$50

Level: Beginner Instructor: Christina Prerequisite: None

Thu, September 8th, 10-3pm
Sun, October 9th, 10-3pm



Heat Patinas for Copper and Brass - \$40

Level: Beginner Instructor: Christina Prerequisite: Intro to Butane Torch (Must be 18+)

Thu, September 15th, 10-2pm
Sat, October 8th, 10-2pm

Open Hot Studio - \$15

Level: Any Instructor: Kristin Prerequisite: Any Metalsmithing Class (Must be 18+)

Thu, September 29th, 10-1pm Sun, October 16th, 3-6pm
Sat, November 5th, 10-1pm Tue, December 13th, 10-1pm

Use our space and equipment to work on your metalsmithing projects! This is mentored independent work time and an opportunity to work on projects you don't have the tools or work space for at home, or to work on challenging projects that you would like assistance with. The instructor can help you develop a plan for your project, assist in problem solving or technical issues, or just offer moral support. This is a great chance to get together with other students for good fun and conversation.

This is not a class and will not offer any specific or planned instruction or lesson. No specific techniques are taught in this open studio session, nor is it one-on-one guidance. Must have taken a prior metalsmithing class at Beadworld. If you plan to use our torches, you must have taken Introduction to Butane Torch or Introduction to Soldering. Consumables not provided.